

# LARGE ALUMINUM ELECTROLYTIC CAPACITORS

**GL** Screw Terminal Type, Long Life Series

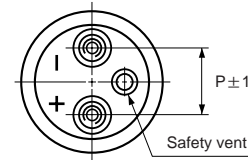
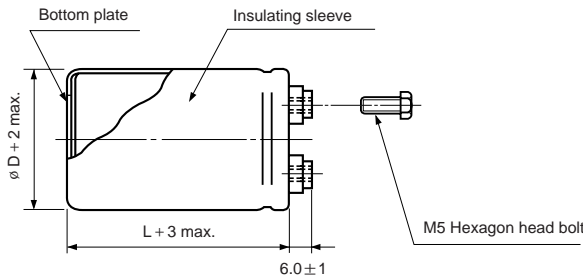
- Screw terminal series in compact case sizes
- High reliability, long life guaranteed for 20000 hours load life at 85°C
- Suited for use in industrial power supplies for inverters



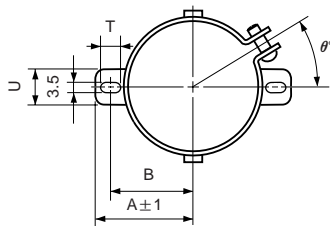
Item	Characteristics	
Rated voltage	350 ~ 450V	
Operating temperature range	-25 ~ +85°C	
Leakage current max.	$I=3\sqrt{CV}$ ( $\mu A$ ) (after 5 minutes)	
Capacitance tolerance	$\pm 20\%$ at 120Hz, 20°C	
Dissipation factor max.	0.20 max. at 120Hz, 20°C	
Load life (after application of the rated voltage for 20000 hours at 85°C)	Leakage current	Less than specified value
	Capacitance change	Within $\pm 20\%$ of initial value
	$\tan\delta$	Less than 300% of specified value
Shelf life (at 85°C)	After 1000 hours no load test, leakage current, capacitance and $\tan\delta$ are same as load life value.	

## ● DRAWING

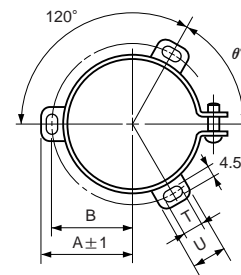
Unit : mm



## ● TWO LEGS ANGLE



## ● THREE LEGS ANGLE



## ● TWO LEGS ANGLE SIZE TABLE

$\phi D$	B	A	T	U	$\theta^\circ$	P
51	33.6	39.9	6	14	30	22
63.5	40.8	46.8	6	14	30	28.6

## ● THREE LEGS ANGLE SIZE TABLE

$\phi D$	B	A	T	U	$\theta^\circ$	P
51	32.9	38.9	7	12	60	22
63.5	38.4	45.3	7	14	60	28.6
76.2	44.5	51.5	8	16	60	31.8
89	50.8	61	8	16	60	31.8

## GL series

### ● DIMENSIONS & MAXIMUM PERMISSIBLE RIPPLE CURRENT

WV Item $\mu F$	350			400			450		
	$\varnothing D \times L$ (mm)	Ripple current (A rms)		$\varnothing D \times L$ (mm)	Ripple current (A rms)		$\varnothing D \times L$ (mm)	Ripple current (A rms)	
		40°C 120Hz	85°C 120Hz		40°C 120Hz	85°C 120Hz		40°C 120Hz	85°C 120Hz
1500							51 × 110	13.4	6.1
1800				51 × 110	14.6	6.6	51 × 130	15.7	7.1
2200	51 × 110	16.2	7.3	51 × 130	17.3	7.9	63.5 × 110	17.2	7.8
2700	51 × 130	19.2	8.7	63.5 × 110	19.0	8.7	63.5 × 130	20.3	9.2
3300	63.5 × 100	20.3	9.2	63.5 × 130	22.5	10.2	76.2 × 110	21.7	9.9
3900	63.5 × 110	22.9	10.4	76.2 × 100	22.7	10.3	76.2 × 130	25.1	11.4
4700	76.2 × 100	25.0	11.4	76.2 × 130	27.6	12.5	76.2 × 150	29.1	13.2
5600	76.2 × 110	28.2	12.8	76.2 × 150	31.8	14.5	76.2 × 160	32.7	14.8
6800	76.2 × 130	33.1	15.1	76.2 × 160	36.0	16.4	89 × 150	38.5	17.5
8200	76.2 × 150	39.5	18.0	89 × 150	42.3	19.2	89 × 160	43.4	19.7
10000	89 × 150	46.7	21.2	89 × 160	47.9	21.8			
12000	89 × 160	52.5	23.9						

### ● PERMISSIBLE RIPPLE CURRENT MULTIPLIERS

Frequency	50Hz	120Hz	300Hz	1kHz	3kHz
Coefficient	0.8	1.0	1.1	1.3	1.4