

# LARGE ALUMINUM ELECTROLYTIC CAPACITORS



## EV High ripple Current, High Reliability Series

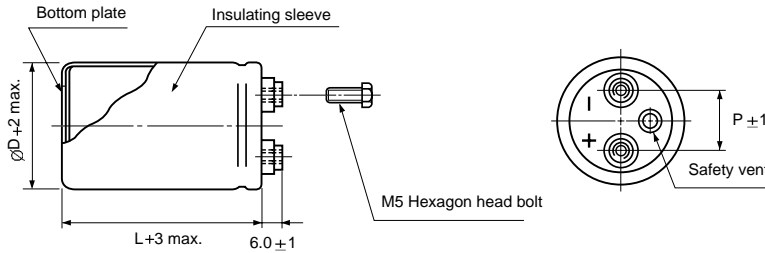
- High ripple current compared with GF series
- Newly improved long life guaranteed for 5000 hours load life at 105°C
- Suitable for the general-purpose inverter



Item	Characteristics	
Rated voltage	400V, 450V	
Operating temperature range	-25 ~ +105°C	
Capacitance tolerance	±20% at 120Hz, 20°C	
Leakage current max.	$I = 3\sqrt{CV}$ ( $\mu A$ ) (after 5 minutes)	
Dissipation factor	0.2 max. at 120Hz, 20°C	
Load life (after application of the rated voltage for 5000 hours at 105°C)	Leakage current	Less than specified value
	Capacitance change	Within ±20% of initial value
	$\tan \delta$	Less than 200% of specified value
Shelf life (at 105°C)	After 1000 hours no load test, leakage current, capacitance and $\tan \delta$ are same as load life value.	

### DRAWING

Unit : mm



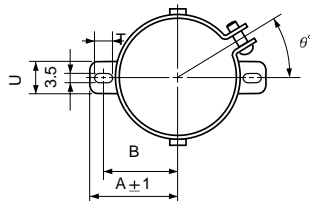
### TWO LEGS ANGLE SIZE TABLE

$\phi D$	B	A	T	U	$\theta^\circ$	P
51	33.6	39.9	6	14	30	22
63.5	40.8	46.8	6	14	30	28.6

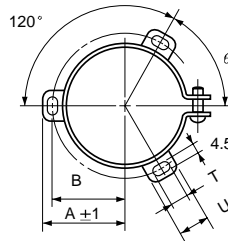
### THREE LEGS ANGLE SIZE TABLE

$\phi D$	B	A	T	U	$\theta^\circ$	P
51	32.9	38.9	7	12	60	22
63.5	38.4	45.3	7	14	60	28.6
76.2	44.5	51.5	8	16	60	31.8
89	50.8	61	8	16	60	31.8

### TWO LEGS ANGLE



### THREE LEGS ANGLE



### DIMENSIONS & MAXIMUM PERMISSIBLE RIPPLE CURRENT

WV Item $\mu F$	400		450	
	$\phi D \times L$ (mm)	Ripple Current (A rms) 105°C 120Hz	$\phi D \times L$ (mm)	Ripple Current (A rms) 105°C 120Hz
2200	63.5 × 110	11.6	63.5 × 115	12.1
2700	63.5 × 115	13.7	63.5 × 130	14.3
3300	63.5 × 130	16.1	76.2 × 110	16.9
4700	76.2 × 130	21.2	76.2 × 140	22.6
5600	76.2 × 150	24.3	76.2 × 160	25.2
6800	89 × 150	27.1	89 × 160	26.0

### PERMISSIBLE RIPPLE CURRENT MULTIPLIERS

Frequency	50Hz	120Hz	300Hz	1kHz	3kHz
Coefficient	0.8	1.0	1.1	1.3	1.4